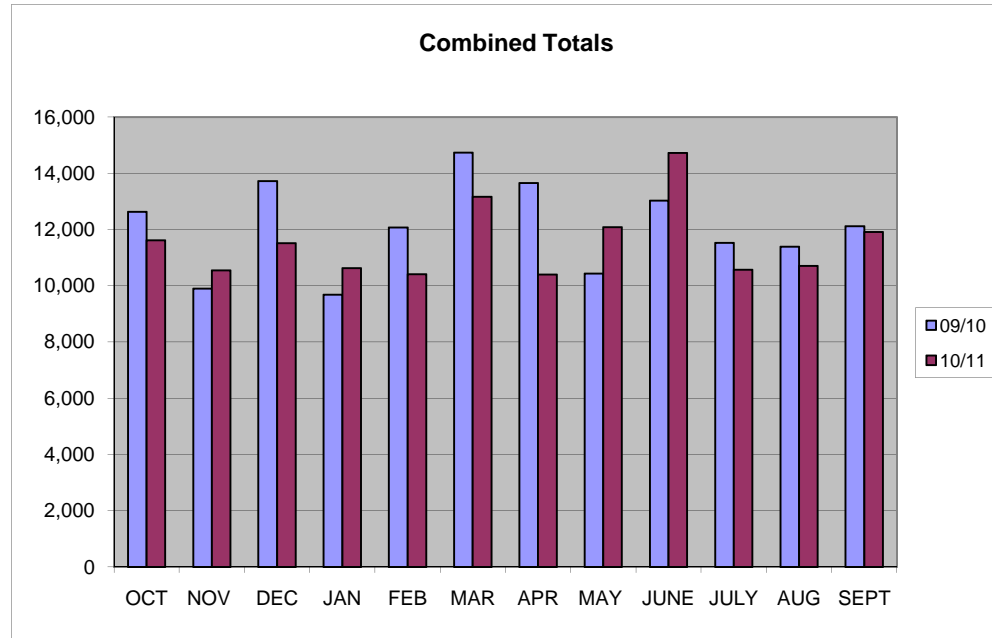


Through: September 2011

Citations Issued By Agency
Comparison Report FY 2010-2011

Month	Citations Received		
	2009/10 Oct-Sep	2010/11 Oct-Sep (ytd)	%Change
October	12,631	11,610	-8.1%
November	9,897	10,543	6.5%
December	13,719	11,511	-16.1%
January	9,684	10,622	9.7%
February	12,073	10,412	-13.8%
March	14,730	13,163	-10.6%
April	13,648	10,399	-23.8%
May	10,433	12,086	15.8%
June	13,030	14,720	13.0%
July	11,524	10,570	-8.3%
August	11,389	10,706	-6.0%
September	12,117	11,906	-1.7%
COMBINED TOTALS FOR ALL AGENCIES	144,874	138,248	-4.6%



LARGER AGENCIES

Agencies	Citations Received YTD		
	2009/10 Oct-Sep	2010/11 Oct-Sep (ytd)	%Change
Pinellas Sheriff	37,810	32,434	-14.2%
Largo PD	13,342	13,568	1.7%
Clearwater PD	18,562	18,346	-1.2%
FHP	14,633	14,640	0.0%
St Petersburg PD	34,488	33,133	-3.9%
Pinellas Park PD	12,402	11,240	-9.4%
TOTALS	131,237	123,361	-6.0%

SMALLER AGENCIES

Agencies	Citations Received YTD		
	2009/10 Oct-Sep	2010/11 Oct-Sep (ytd)	%Change
Belleair PD	130	335	157.7%
Gulfport	1,886	2,448	29.8%
Indian Shores*	892	975	9.3%
Kenneth City	1,091	2,773	154.2%
St Pete Beach	2,376	1,742	-26.7%
Tarpon Springs	4,424	3,440	-22.2%
Treasure Island	1,923	2,097	9.0%
State Agency	740	867	17.2%
Other***	143	188	31.5%
Fish Wild Comm	12	15	25.0%
County Campus	1	2	100.0%
USF Campus	19	5	-73.7%
TOTALS	13,637	14,887	9.2%

RED LIGHT CAMERA

Agencies	Citations Received YTD		
	2009/10 Oct-Sep	2010/11 Oct-Sep (ytd)	%Change
Gulfport	0	561	-
Kenneth City	0	1,365	-
So. Pasadena	0	1,851	-
	0	0	-
	0	0	-
	0	0	-
	0	0	-
	0	0	-
TOTALS	0	3,777	-

clktc311a

*Indian Shores PD Figures includes: Indian Shores and Redington Shores

**Redington Bch PD Figures includes: Redington Bch and No Redington Bch

***Other includes: DOT, FCW

Red light camera violations noted here are included in the totals listed in the other tables and are not in addition to those numbers. Red light camera violations in the report include only those violations that were sent to the Clerk of the Circuit Court to be listed on a person's driving record and do not include those that were settled by the jurisdiction prior being sent to the Clerk as a Uniform Traffic Citation.