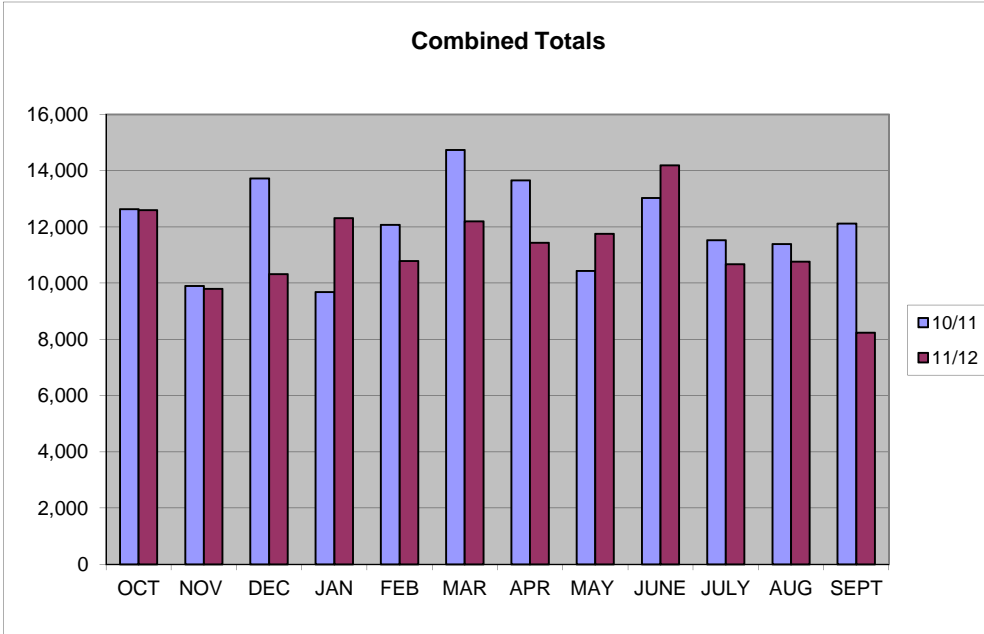


Citations Issued By Agency
Comparison Report FY 2011-2012

Through: September 2012

Month	Citations Received		
	2010/11 Oct-Sep	2011/12 Oct-Sep (ytd)	%Change
October	12,631	12,589	-0.3%
November	9,897	9,793	-1.1%
December	13,719	10,312	-24.8%
January	9,684	12,306	27.1%
February	12,073	10,789	-10.6%
March	14,730	12,195	-17.2%
April	13,648	11,437	-16.2%
May	10,433	11,754	12.7%
June	13,030	14,189	8.9%
July	11,524	10,666	-7.4%
August	11,389	10,762	-5.5%
September	12,117	8,237	-32.0%
COMBINED TOTALS FOR ALL AGENCIES	138,248	135,029	-2.3%



LARGER AGENCIES

Agencies	Citations Received YTD		
	2010/11 Oct-Sep	2011/12 Oct-Sep (ytd)	%Change
Pinellas Sheriff	32,434	30,164	-7.0%
Largo PD	13,568	11,857	-12.6%
Clearwater PD	18,346	16,772	-8.6%
FHP	14,640	10,335	-29.4%
St Petersburg PD	33,133	40,990	23.7%
Pinellas Park PD	11,240	9,567	-14.9%
TOTALS	123,361	119,685	-3.0%

6 Month % Change Comparative Analysis			
	2010/2011	2011/2012	%Chg
1st Half	72,734	67,984	-6.5%
2nd Half	72,141	67,045	-7.1%
%Chg	-0.8%	-1.4%	

SMALLER AGENCIES

Agencies	Citations Received YTD		
	2010/11 Oct-Sep	2011/12 Oct-Sep (ytd)	%Change
Belleair PD	335	235	-29.9%
Gulfport	2,448	2,806	14.6%
Indian Shores*	975	652	-33.1%
Kenneth City	2,773	4,686	69.0%
St Pete Beach	1,742	1,351	-22.4%
Tarpon Springs	3,440	3,070	-10.8%
Treasure Island	2,097	1,844	-12.1%
State Agency	867	468	-46.0%
Other***	188	182	-3.2%
Fish Wild Comm	15	23	53.3%
County Campus	2	0	-100.0%
USF Campus	5	27	440.0%
TOTALS	14,887	15,344	3.1%

RED LIGHT CAMERA

Agencies	Citations Received YTD		
	2010/11 Oct-Sep	2011/12 Oct-Sep (ytd)	%Change
Gulfport	561	1,383	-
Kenneth City	1,365	2,536	-
So. Pasadena	1,851	3,366	-
St. Pete	0	9,747	-
	0	0	-
	0	0	-
	0	0	-
	0	0	-
	0	0	-
TOTALS	3,777	17,032	-

Red light camera violations noted here are included in the totals listed in the other tables and are not in addition to those numbers. Red light camera violations in the report include only those violations that were sent to the Clerk of the Circuit Court to be listed on a person's driving record and do not include those that were settled by the jurisdiction prior being sent to the Clerk as a Uniform Traffic Citation.

*Indian Shores PD Figures includes: Indian Shores and Redington Shores

**Redington Bch PD Figures includes: Redington Bch and No Redington Bch

***Other includes: DOT, FCW

Citations Issued By Agency
Comparison Report FY 2011-2012