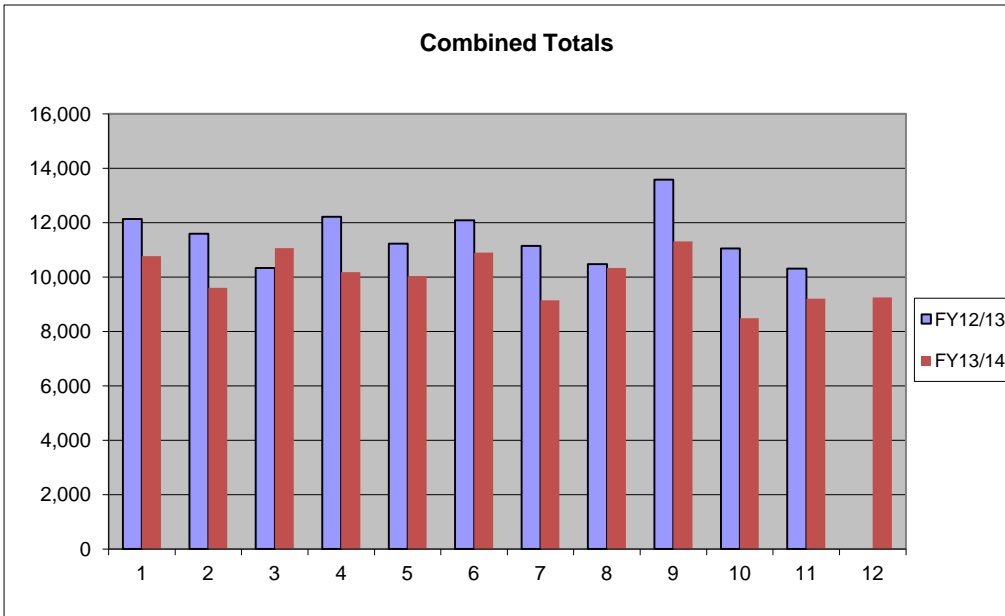


Citations Issued By Agency  
Comparison Report FY 2013-2014

Through:

Month	Citations Received		
	2012/13 Oct-Sep	2013/14 Oct-Sep (ytd)	%Change
October	12,133	10,765	-11.3%
November	11,595	9,600	-17.2%
December	10,338	11,062	7.0%
January	12,214	10,186	-16.6%
February	11,228	10,030	-10.7%
March	12,088	10,902	-9.8%
April	11,145	9,145	-17.9%
May	10,473	10,334	-1.3%
June	13,581	11,304	-16.8%
July	11,055	8,490	-23.2%
August	10,306	9,201	-10.7%
September	0	9,249	#DIV/0!
<b>COMBINED TOTALS FOR ALL AGENCIES</b>	<b>126,156</b>	<b>120,268</b>	<b>-4.7%</b>



LARGER AGENCIES

Agencies	Citations Received YTD		
	2012/13 Oct-Sep	2013/14 Oct-Sep (ytd)	%Change
Pinellas Sheriff	26,882	22,391	-16.7%
Largo PD	11,809	11,072	-6.2%
Clearwater PD	18,499	18,722	1.2%
FHP	16,213	16,697	3.0%
St Petersburg PD	39,316	31,749	-19.2%
Pinellas Park PD	9,064	9,525	5.1%
<b>TOTALS</b>	<b>121,783</b>	<b>110,156</b>	<b>-9.5%</b>

6 Month % Change Comparative Analysis			
	2012/2013	2013/2014	%Chg
1st Half	69,596	62,545	-10.1%
2nd Half	56,560	57,723	2.1%
%Chg	-18.7%	-7.7%	

SMALLER AGENCIES

Agencies	Citations Received YTD		
	2012/13 Oct-Sep	2013/14 Oct-Sep (ytd)	%Change
Belleair PD	130	123	-5.4%
Gulfport	2,491	2,149	-13.7%
Indian Shores*	1,129	721	-36.1%
Kenneth City	2,988	1,913	-36.0%
St Pete Beach	324	1	-99.7%
Tarpon Springs	3,026	2,717	-10.2%
Treasure Island	2,074	2,022	-2.5%
State Agency	1,561	229	-85.3%
Other***	282	99	-64.9%
Fish Wild Comm	41	73	78.0%
County Campus	1	0	-100.0%
USF Campus	32	65	103.1%
<b>TOTALS</b>	<b>14,079</b>	<b>10,112</b>	<b>-28.2%</b>

RED LIGHT CAMERA

Agencies	Citations Received YTD		
	2012/13 Oct-Sep	2013/14 Oct-Sep (ytd)	%Change
Gulfport	1,045	914	-
Kenneth City	2,134	1,168	-
So. Pasadena	2,327	1,390	-
St. Pete	7,778	4,087	-
Clearwater	<del>1,818</del>	1,818	-
Oldsmar	<del>559</del>	559	-
			-
			-
			-
<b>TOTALS</b>	<b>13,284</b>	<b>9,936</b>	<b>-</b>

Red light camera violations noted here are included in the totals listed in the other tables and are not in addition to those numbers. Red light camera violations in the report include only those violations that were sent to the Clerk of the Circuit Court to be listed on a person's driving record and do not include those that were settled by the jurisdiction prior being sent to the Clerk as a Uniform Traffic Citation.

\*Indian Shores PD Figures includes: Indian Shores and Redington Shores

\*\*Redington Bch PD Figures includes: Redington Bch and No Redington Bch

\*\*\*Other includes: DOT, FCW