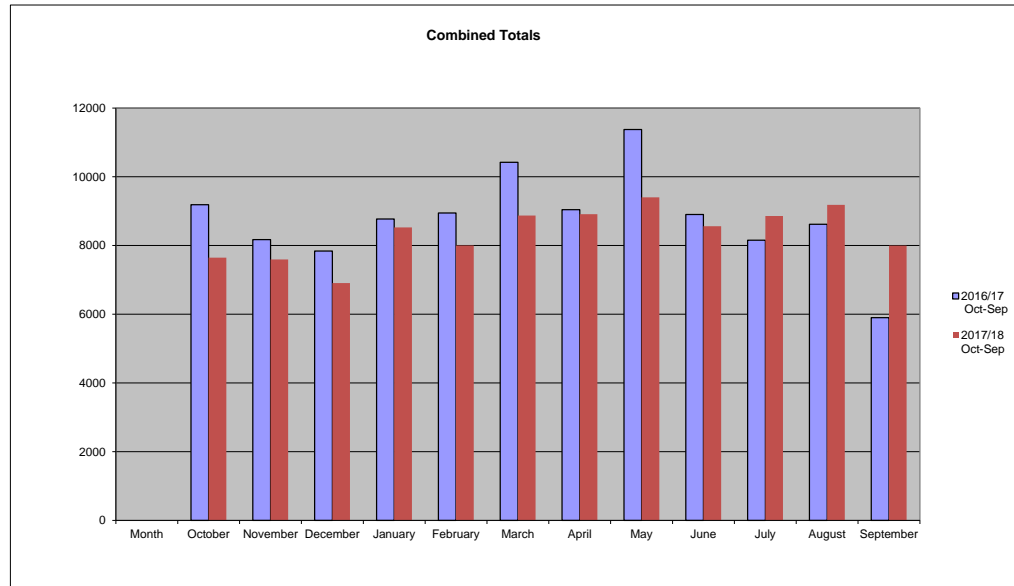


Citations Received			
Month	2016/17 Oct-Sep	2017/18 Oct-Sep	%Change
October	9,188	7,649	-16.8%
November	8,174	7,594	-7.1%
December	7,838	6,906	-11.9%
January	8,774	8,525	-2.8%
February	8,947	8,001	-10.6%
March	10,423	8,873	-14.9%
April	9,043	8,911	-1.5%
May	11,378	9,404	-17.3%
June	8,903	8,561	-3.8%
July	8,154	8,860	8.7%
August	8,620	9,185	6.6%
September	5,899	7,998	35.6%
COMBINED TOTALS FOR ALL AGENCIES	105,341	100,467	-4.6%



Clearwater - Red Light Camera			
Month	2016/2017 (YTD)	2017/2018 (YTD)	2017/2018 % Change
October	235	180	-23.4%
November	593	320	-46.0%
December	1139	0	-
January	1562	667	-57.3%
February	1977	994	-49.7%
March	2324	1,415	-39.1%
April	2483	1,709	-31.2%
May	2664	1,934	-27.4%
June	2820	2,234	-20.8%
July	2993	2,859	-4.5%
August	3172	3,327	4.9%
September	3410	3,773	10.6%

Red light camera violations noted here are included in the totals listed in the other tables and are not in addition to those numbers. Red light camera violations in the report include only those violations that were sent to the Clerk of the Circuit Court to be listed on a person's driving record and do not include those that were settled by the jurisdiction prior to being sent to the Clerk as a Uniform Traffic Citation.

6 Month % Change Comparative Analysis			
	2016/2017	2017/2018	%Chg
1st Half	53,344	47,548	-10.9%
2nd Half	51,997	52,919	1.8%
%Chg	-2.5%	11.3%	

LARGER AGENCIES																		
Month	Pinellas Sheriff			Largo PD			Clearwater PD			FHP			St. Petersburg PD			Pinellas Park PD		
	2016/2017 (YTD)	2017/2018 (YTD)	2017/2018 % Change	2016/2017 (YTD)	2017/2018 (YTD)	2017/2018 % Change	2016/2017 (YTD)	2017/2018 (YTD)	2017/2018 % Change	2016/2017 (YTD)	2017/2018 (YTD)	2017/2018 % Change	2016/2017 (YTD)	2017/2018 (YTD)	2017/2018 % Change	2016/2017 (YTD)	2017/2018 (YTD)	2017/2018 % Change
October	2304	1,561	-32.2%	626	694	10.9%	1364	1,048	-23.2%	1431	1,055	-26.3%	2453	2,088	-14.9%	1431	1,055	-26.3%
November	4210	2,981	-29.2%	1409	1,339	-5.0%	2677	2,171	-18.9%	2637	1,921	-27.2%	4368	4,491	2.8%	2637	1,921	-27.2%
December	5937	4,364	-26.5%	2065	1,954	-5.4%	4149	3,307	-20.3%	3758	2,823	-24.9%	6267	6,428	2.6%	3758	2,823	-24.9%
January	7846	5,888	-25.0%	2907	2,689	-7.5%	5633	4,493	-20.2%	5017	3,996	-20.4%	8445	8,553	1.3%	5017	3,996	-20.4%
February	9705	7,586	-21.8%	3517	3,404	-3.2%	7135	5,614	-21.3%	6636	4,992	-24.8%	10817	10,619	-1.8%	6636	4,992	-24.8%
March	11727	9,412	-19.7%	4111	4,137	0.6%	8742	7,080	-19.0%	8780	6,076	-30.8%	13874	13,044	-6.0%	8780	6,076	-30.8%
April	13247	11,083	-16.3%	4868	5,051	3.8%	10449	8,353	-20.1%	10436	7,147	-31.5%	16328	15,692	-3.9%	10436	7,147	-31.5%
May	15782	12,948	-18.0%	5849	5,844	-0.1%	12010	9,763	-18.7%	12588	8,279	-34.2%	18961	18,243	-3.8%	12588	8,279	-34.2%
June	17780	14,779	-16.9%	6808	6,612	-2.9%	13149	10,849	-17.5%	13841	9,345	-32.5%	21322	20,247	-5.0%	13841	9,345	-32.5%
July	19360	16,388	-15.4%	7626	7,506	-1.6%	14423	12,209	-15.4%	15102	10,721	-29.0%	23652	22,247	-5.9%	15102	10,721	-29.0%
August	21031	18,558	-11.8%	8562	8,337	-2.6%	15688	13,624	-13.2%	16507	11,685	-29.2%	25951	24,514	-5.5%	16507	11,685	-29.2%
September	22036	20,257	-8.1%	9088	9,083	-0.1%	16729	14,790	-11.6%	17336	12,678	-26.9%	27789	26,529	-4.5%	17336	12,678	-26.9%

SMALLER AGENCIES															
Month	Belleair PD			Gulfport			Indian Shores			Kenneth City			Tarpon Springs		
	2016/2017 (YTD)	2017/2018 (YTD)	2017/2018 % Change	2016/2017 (YTD)	2017/2018 (YTD)	2017/2018 % Change	2016/2017 (YTD)	2017/2018 (YTD)	2017/2018 % Change	2016/2017 (YTD)	2017/2018 (YTD)	2017/2018 % Change	2016/2017 (YTD)	2017/2018 (YTD)	2017/2018 % Change
October	10	17	70.0%	104	89	-14.4%	67	59	-11.9%	23	26	13.0%	145	192	32.4%
November	15	43	186.7%	200	207	3.5%	155	121	-21.9%	80	55	-31.3%	286	361	26.2%
December	21	64	204.8%	293	316	7.8%	263	205	-22.1%	121	99	-18.2%	407	543	33.4%
January	30	75	150.0%	398	452	13.6%	359	300	-16.4%	186	130	-30.1%	569	787	38.3%
February	36	95	163.9%	470	552	17.4%	414	372	-10.1%	253	145	-42.7%	722	986	36.6%
March	49	120	144.9%	589	667	13.2%	477	410	-14.0%	343	155	-54.8%	935	1,164	24.5%
April	57	142	149.1%	693	764	10.2%	505	469	-7.1%	399	167	-58.1%	1069	1,377	28.8%
May	75	174	132.0%	809	907	12.1%	546	492	-9.9%	448	171	-61.8%	1288	1,542	19.7%
June	93	185	98.9%	856	1,019	19.0%	571	492	-13.7%	496	195	-60.7%	1522	1,639	7.7%
July	99	202	104.0%	914	1,131	23.7%	586	552	-5.8%	522	223	-57.3%	1768	1,756	-0.7%
August	106	221	108.5%	1,019	1,282	25.8%	633	595	-6.0%	543	234	-56.9%	1975	1,935	-2.0%

September	114	0	-	1,072	0	-	658	0	-	553	0	-	2115	0	-
Month	Treasure Island			SAO			Other			Department of Fish & Wild Life Com.			USF		
	2016/2017 (YTD)	2017/2018 (YTD)	2017/2018 % Change	2016/2017 (YTD)	2017/2018 (YTD)	2017/2018 % Change	2016/2017 (YTD)	2017/2018 (YTD)	2017/2018 % Change	2016/2017 (YTD)	2017/2018 (YTD)	2017/2018 % Change	2016/2017 (YTD)	2017/2018 (YTD)	2017/2018 % Change
October	114	52	-54.4%	0	2	-	0	0	-	6	8	33.3%	3	1	-66.7%
November	206	110	-46.6%	0	5	-	0	0	-	8	14	75.0%	5	5	0.0%
December	316	155	-50.9%	0	6	-	0	0	-	19	19	0.0%	6	0	-
January	407	224	-45.0%	0	10	-	0	0	-	21	25	19.0%	7	0	-
February	465	308	-33.8%	0	0	-	0	0	-	21	28	33.3%	7	12	71.4%
March	557	396	-28.9%	0	14	-	0	0	-	21	31	47.6%	13	13	0.0%
April	621	484	-22.1%	0	16	-	0	0	-	26	34	30.8%	14	14	0.0%
May	699	542	-22.5%	0	20	-	0	0	-	30	41	36.7%	16	0	-
June	760	595	-21.7%	0	0	-	0	0	-	37	45	21.6%	16	0	-
July	822	650	-20.9%	0	21	-	0	0	-	40	54	35.0%	19	0	-
August	884	707	-20.0%	0	22	-	0	0	-	48	57	18.8%	21	16	-23.8%
September	936	0	-	0	0	-	0	0	-	55	0	-	21	0	-

*** "Other" includes any Agencies which are not listed in these tables